

**Environmental  
Resources  
Management**

399 Boylston Street, 6<sup>th</sup> Floor  
Boston, MA 02116  
(617) 646-7800  
(617) 267-6447 (fax)

<http://www.erm.com>

13 February 2004  
Reference: 0013606

Mr. Brian J. Monahan  
Conservation Commission  
Wayland Town Hall  
41 Cochituate Road  
Wayland, MA 01778



**Subject:** Notice of Commencement of Activity (per Condition Number 26) and Work Plan Modification (per Condition Number 13), DEP File No. 322-0564: 430 Boston Post Road, Former Raytheon Facility

Dear Brian:

On behalf of Raytheon Company (Raytheon) Environmental Resources Management (ERM) is pleased to submit this written notice of commencement of activities and work plan modification to the Town of Wayland Conservation Commission (Con Com). This notice is submitted in accordance with Condition Number 26 and Condition Number 13, of the Con Com Order of Conditions and Wetlands and Water Resources Permit (Chapter 194), dated 20 November 2003, Department of Environmental Protection File Number 322-0564.

The preparation of the ground surface, including setting up the straw bale and silt fence arrangement, at each vertical profile locations and the installation of the temporary roadway for access of the well installation locations will commence of Wednesday, 18 February 2004. If there is inclement weather, commencement will be postponed. If the installation is postponed, ERM will notify the Conservation Commission verbally and then follow up with written notice of the rescheduled date.

The straw bale and silt fence arrangement as detailed in the Notice of Intent, submitted 26 September 2003, has been modified due to the frozen ground which will prevent installation of the arrangement. ERM will install the straw bale and silt fence arrangement as detailed in Figure 1. This arrangement is will only be used when the Waterloo Profiler borings are advanced using the direct push (Geoprobe) drilling technique, which is the least invasive drilling method and will not result in soil cuttings or drilling fluids being brought to the ground surface.

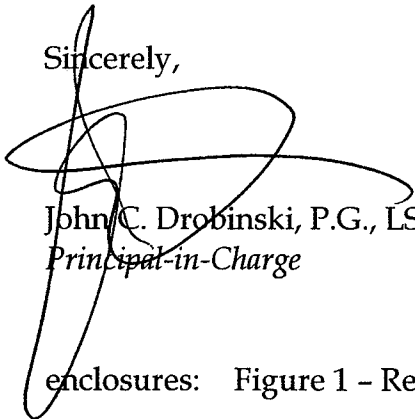
If the direct push (Geoprobe) drilling technique is refused before top of bedrock, an alternative drilling technique will be used to advance past the obstruction. This will not be conducted until the straw bale and silt fence arrangement has been installed as detailed in the NOI, submitted 26 September 2003 and approved by the Con Com on 20 November 2003.

ERM believes that this approach will allow the proposed activities to move forward without any impact to the resource areas and does not require the filing of a new NOI.

ERM requests a site inspection with the Con Com Administrator to inspect the sediment barriers and walk the site in prior to initiation of vertical profiling in accordance with Condition Number 31 on Friday, 20 February 2004.

If you have any questions or comments please contact the undersigned at (617) 267-8377.

Sincerely,



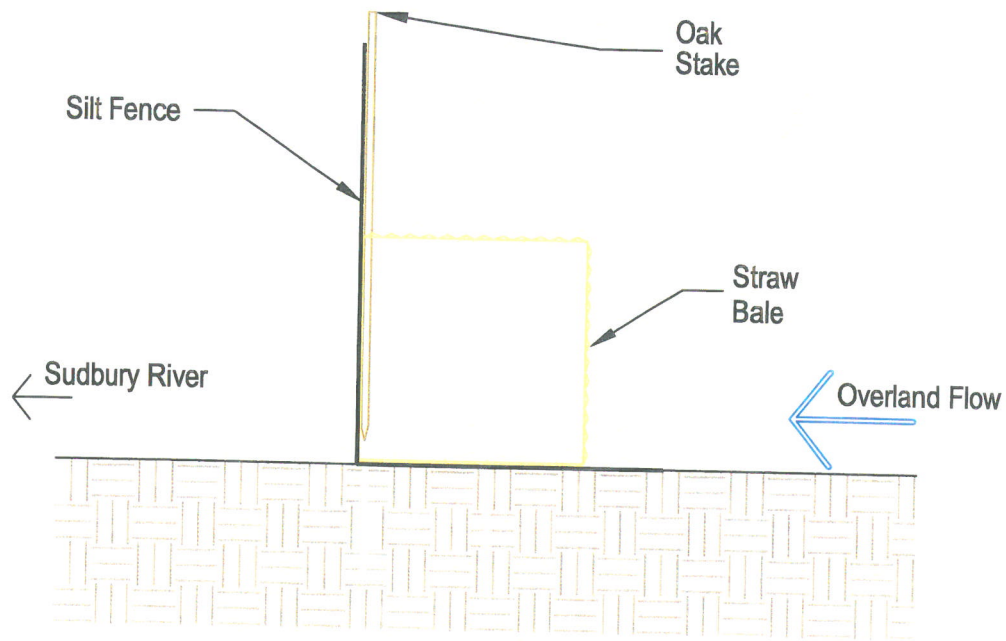
John C. Drobinski, P.G., LSP  
*Principal-in-Charge*



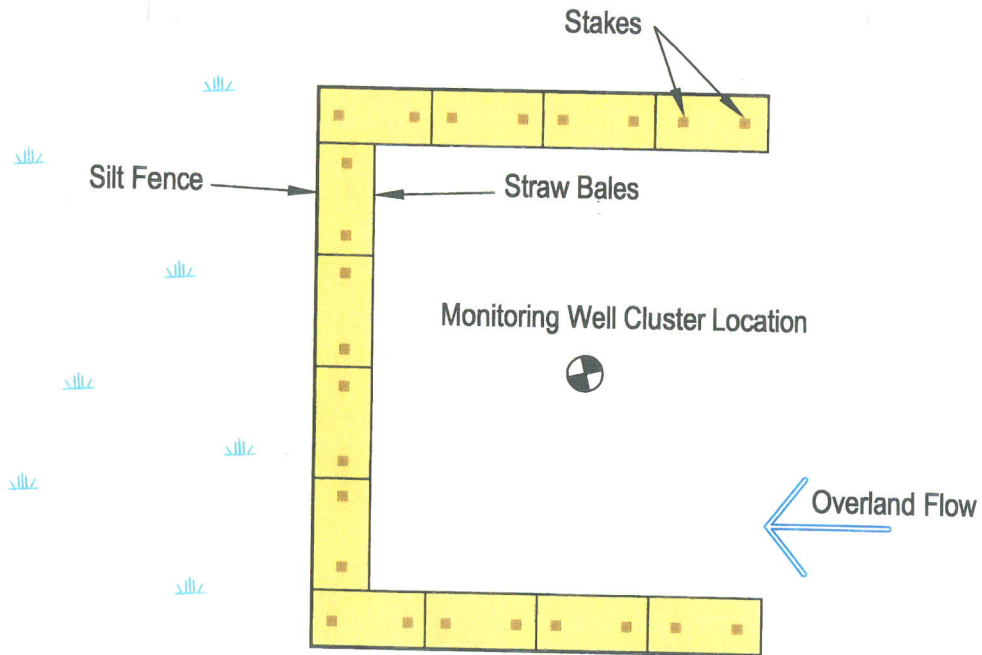
Jeremy J. Picard, P.G.  
*Project Manager*

enclosures: Figure 1 - Revised Straw Bale and Silt Fence Arrangement

cc: Ed Madera, Raytheon Company  
Public Repositories



TYP. BARRIER DETAIL



TYP. SILT FENCE AND STRAW BALE ARRANGEMENT

Scale = Not To Scale

Figure 1 - Revised Straw Bale and Silt Fence Detail  
Former Raytheon Facility - Wayland, MA

